



# Vashon Library Updates for Vashon Community Council





---

## Major Milestone: Seven-Day Service

---

Expanded to 7-day-a-week service  
starting August 24, 2025

---

First Sunday service since the pandemic

---

Direct response to community feedback  
and island's geographic isolation

---

**Now open Sundays 11am-6pm**



## **Current Hours of Operation**

**Sunday** - 11:00am - 6:00pm

**Monday** - 10:00am - 6:00pm

**Tuesday** - 12:00pm - 8:00pm

**Wednesday** - 12:00pm - 8:00pm

**Thursday** - 10:00am - 6:00pm

**Friday** - 10:00am - 6:00pm

**Saturday** - 11:00am - 6:00pm

# Vashon Library Core Services

- 10,000 square foot facility at Ober Park (expanded 2014)
- 38,760 total items available at the Vashon Library
- Vashon Special Collections & World Language materials (Spanish and Japanese, with 24 other languages available for holds)
- Friendly, helpful, and knowledgeable staff
- Meeting room, study rooms, public restrooms, and accessible spaces
- 24/7 book drop
- Computers, printers, faxing and scanning. Printing allowances are now \$5/week.
- King County ballot drop-off site
- 24/7 WiFi access in the parking lot



# CURIOUS CREATURES

## Summer Reading 2025: "Curious Creatures"

- 328 signed up for the program at the Vashon Library
- Reading logs tracked reading progress with prizes for achieving goals
- Available through Beanstack app and physical logs
- One of the most successful summer reading programs in recent years
- Supported with in-library programming as well as outreach to Picnics in the Park and Vashon Kids
- *Engaging youth in reading through creative themes and incentives*



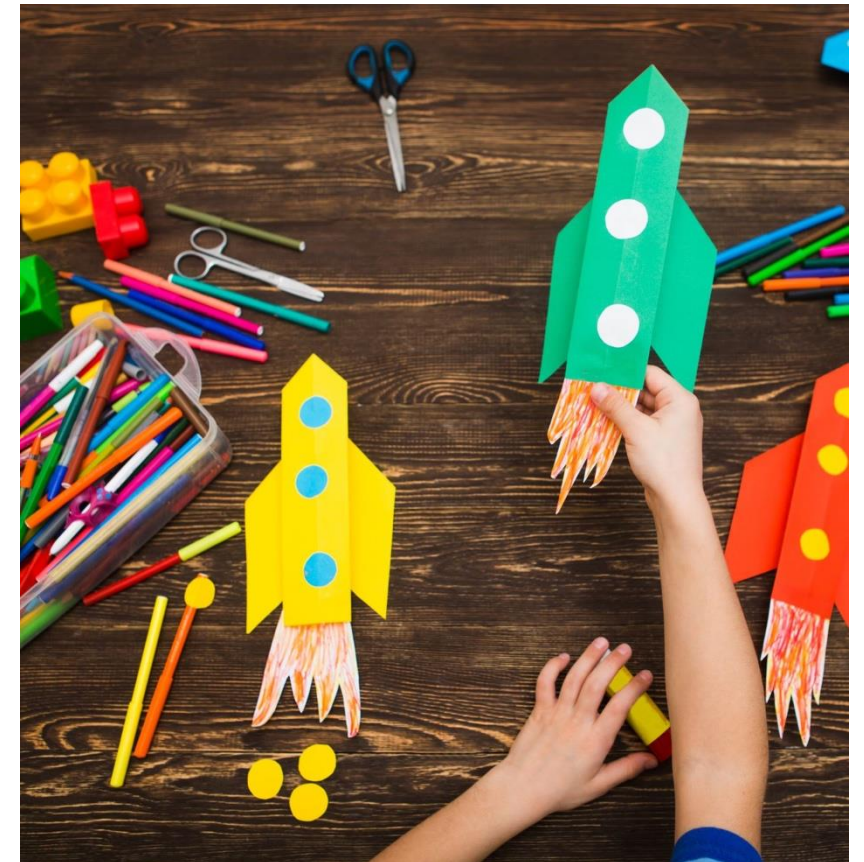


---

## Weekly Youth & Teen Programs

- **Reading Buddies:** Volunteers help students K-8 practice reading aloud.
- **Curiosity Club (K-5):** Weekly crafts with a science bent. Upcoming – Snowball Launchers (1/20) and Bird Feeders (1/27)!
- **Teen Hangout (Gr 6-12):** Arts, crafts, board games, RPGs, and Nintendo Switch
- **Baby/Toddler and Preschool Story Times:** Early Learning starts here! Thursday mornings for birth-6.
- **Spanish Story Times:** Mondays starting February 23rd

*Programs run throughout the year*





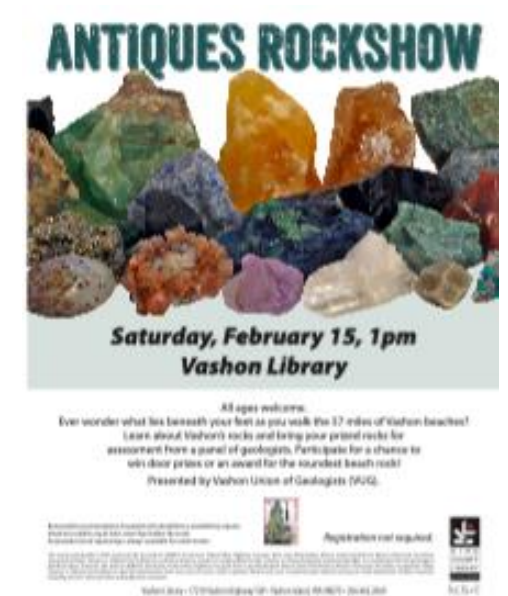
## Adult Programs

- Author visits – Patrick Hutchison, Kiku Hughes, more coming in 2026.
- Great Books Discussion Group: still going strong after 75 years! Now on Zoom!
- Multigeneration Book Club
- Humanities Washington – Doug Levy, Maggie Mertons, Claudia Castro Luna, and more (thanks Vashon Parks!)
- “How to Library” sessions

---

## Special Events

- Day of Remembrance and Day of Exile
- Hobbit Week
- Star Wars Day
- Alice in Wonderland 160th Birthday Celebration
- Antiques Rock Show: Love Rocks!
- StoryWalks®





---

## Community Support Services

- Health insurance assistance with King County Public Health
- King County Metro reduced fare program support
- EBT card assistance (Spanish language support available)
- One-on-one digital literacy assistance
- Drop-in computer help for special projects
- ***Connecting residents to essential resources***





## Vashon Friends of the Library

- Independent 501(c)(3) nonprofit supporting library programs
- Sponsors most special programming and events
- Ongoing book sales at library (\$2 or less)
- Spring community book sale
- **Essential partner in delivering quality programs**







## **Community Partners**

- Vashon Senior Center
  - Vashon Food Bank
  - Vashon Youth & Family Services
  - Dove Project
  - Interfaith Council to Prevent Homelessness
  - Vashon Cares Network
  - Vashon Household
  - Vashon Island School District
  - VARSA
  - Vashon Be Prepared
  - Vashon Health District
  - Vashon Parks District
  - St Vincent de Paul
  - ORBIT/Open Space
  - Vashon Land Trust
  - King County Parks
  - Mukai Farm & Garden
  - Vashon Nonprofit Roundtable
- 



## Why It Matters for Vashon-Maury Island

- Geographic isolation: Ferry required to reach other libraries
  - Community hub and connection point for islanders
  - Supports students with outreach events and after-school enrichment
  - High circulation relative to population size
  - Eliminated late fines to improve equity and access
  - *"Creating more opportunities for people to connect with one another, access vital resources, and feel a deeper sense of belonging"*  
- KCLS Executive Director Heidi Daniel
- 