

# King County Traffic Safety Action Plan Overview

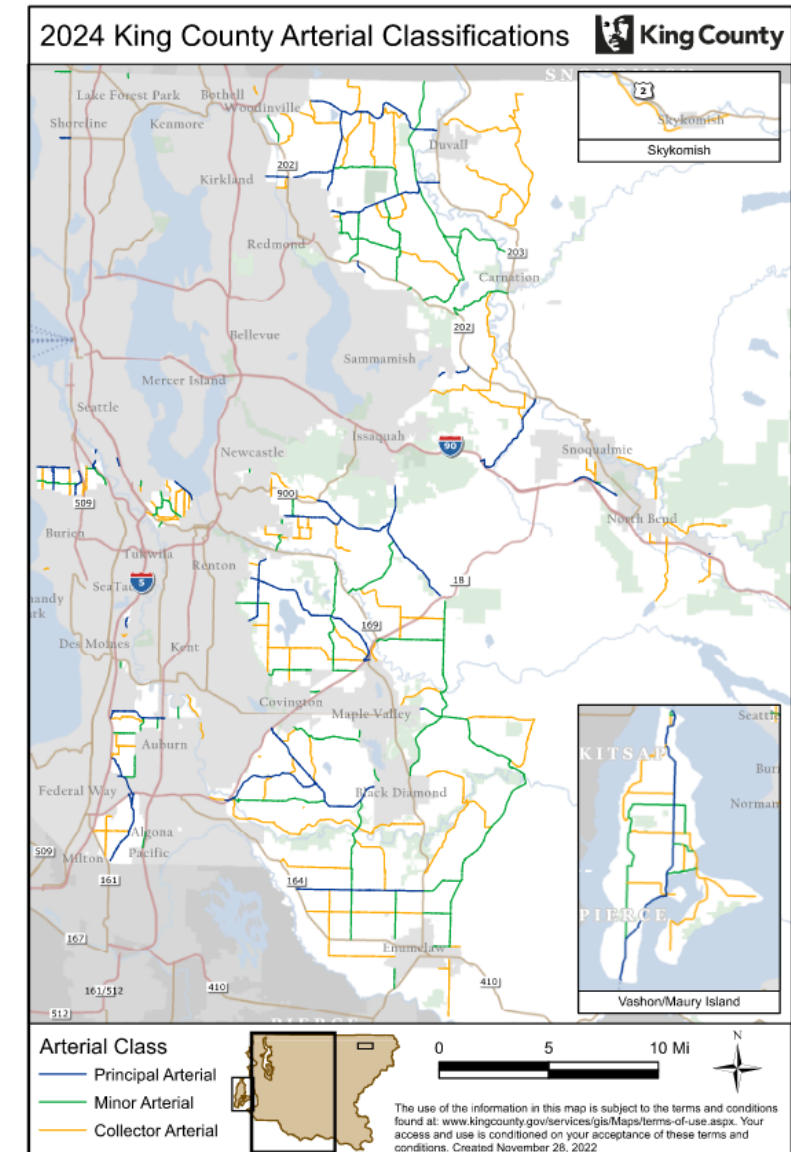
September 18, 2025

John Vander Sluis, King County Department of  
Local Services - Road Services Division



# Unincorporated King County Overview

- Population: 249,000
  - Urban Population: 121,000
  - Rural Population: 128,000
- Road Miles: 1,468
- Severe county road funding crisis



Source: Data based on King County 2023 Collision Data Report

# Safety Action Plan Components



## Safety Analysis

- Collision data analysis
- Policy analysis



## Engagement

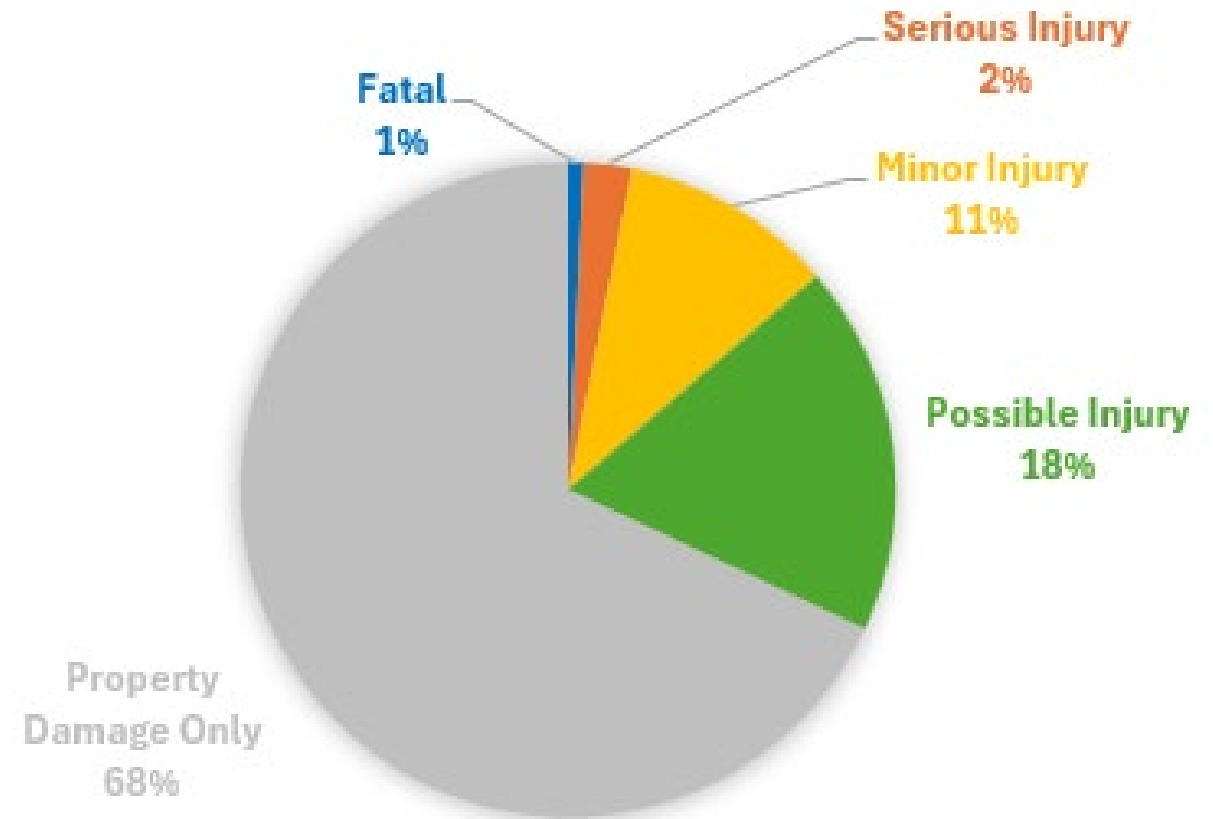
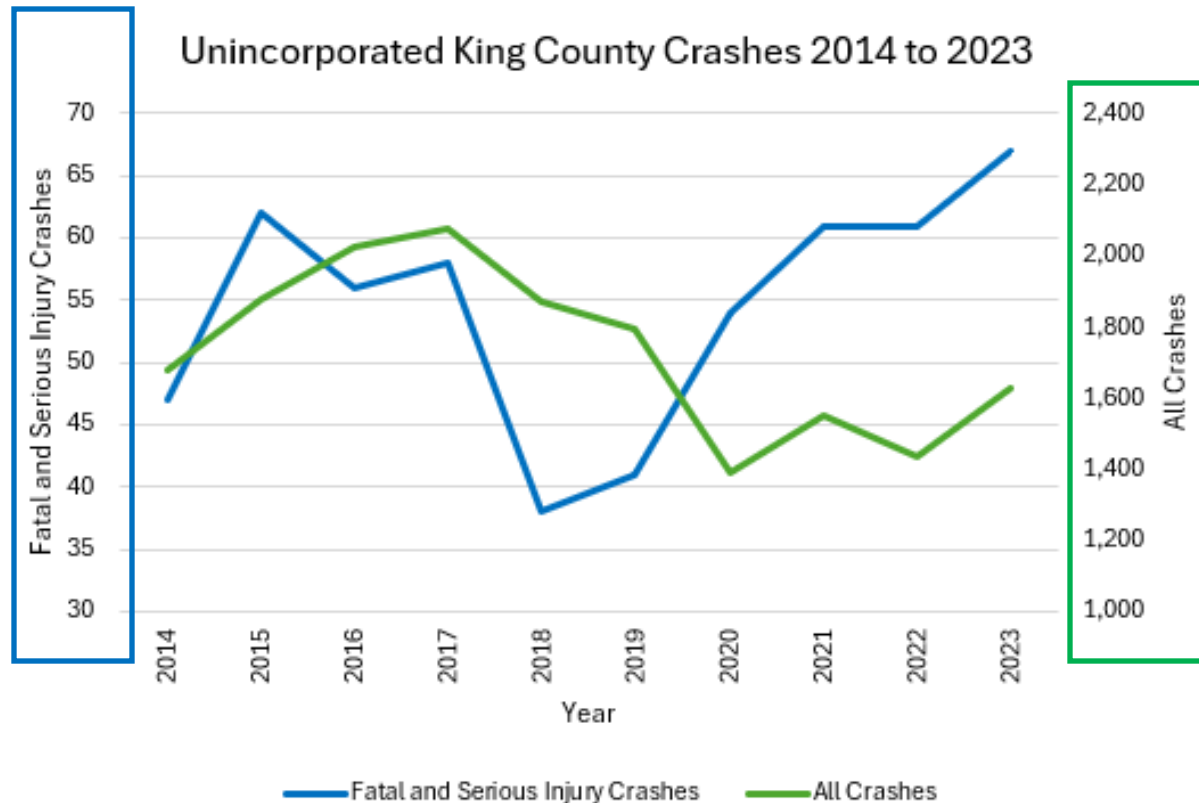


## Strategy & Project Selections

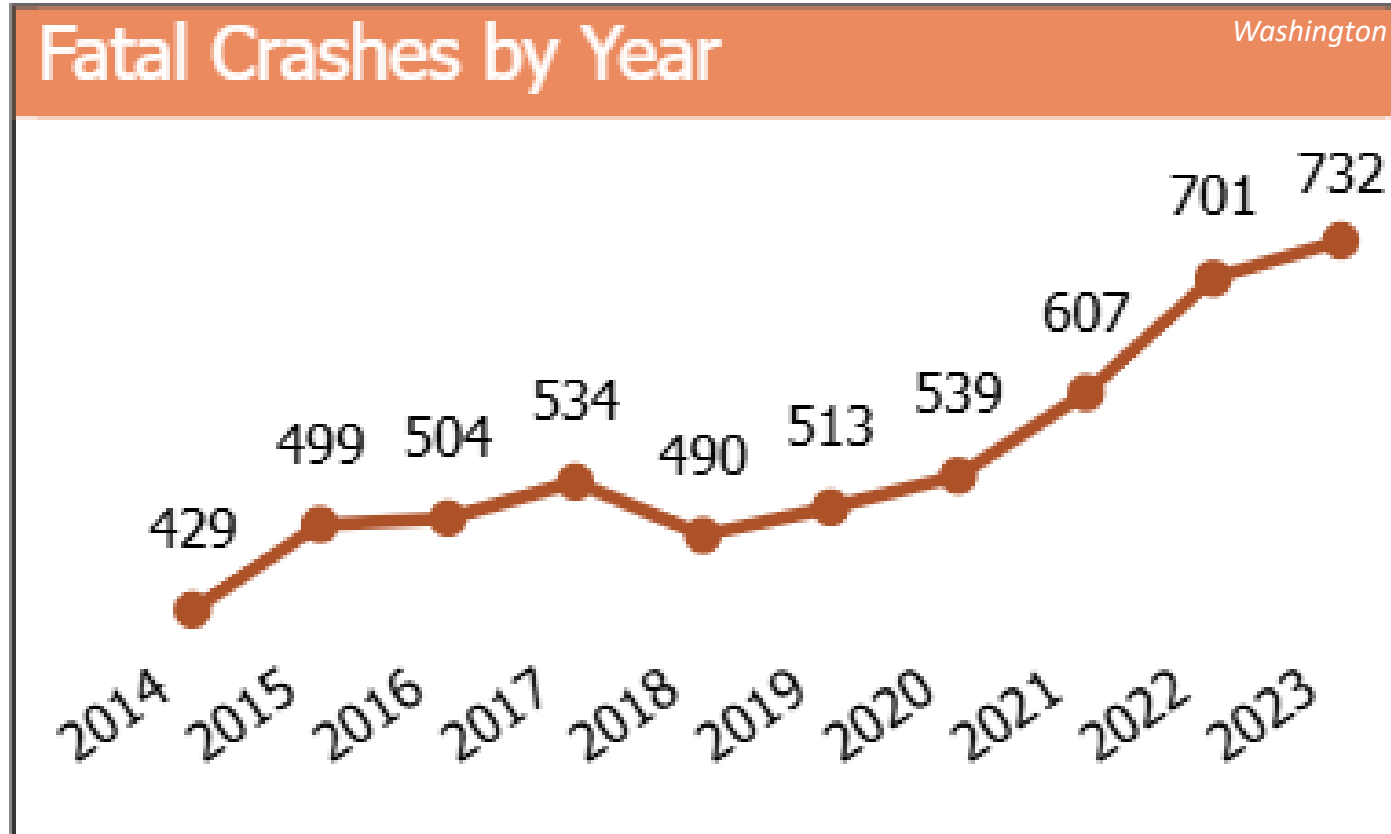


## Progress Tracking

# Unincorporated King County Crash Trends



# Fatal Crashes by Year - Washington



Serious crashes are increasing at the County, state, and federal level

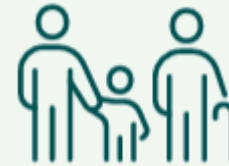
# Emphasis Areas

## Washington SHSP Emphasis Areas:



HIGH RISK BEHAVIOR

- Impairment
- Speeding
- Distraction
- Unrestrained occupants



ROAD USERS BY AGE GROUP

- Young Drivers
- Older Drivers



CRASH TYPE / LOCATION

- Lane departure
- Intersections



ROAD USERS BY MODE OF TRAVEL

- Active Transportation Users
- Motorcyclists
- Heavy Vehicles



# Safe System Approach



## Traffic Safety Feedback

- <https://publicinput.com/e00375>

## 24/7 Road Helpline

- Report road maintenance and safety issues in unincorporated King County such as downed stop signs, signals that are out, or trees over the roadway — 24 hours a day at 206-477-8100 or 1-800-527-6237.
- <https://kingcounty.gov/en/dept/local-services/transit-transportation-roads/roads-and-bridges/road-helpline>